

FORMAX[®]

FlashCard XL LARGE FORMAT BUSINESS CARD CUTTER



User-friendly LCD control panel



FLASHCARD XL Business Card Cutter

The Formax **FlashCard XL Business Card Cutter** is a large format, high quality solution for short-run production of full-bleed business cards, postcards, photos, and more. Its rugged and intuitive design allows users to cut cards on demand at up to 230 business cards per minute.

Featuring a user-friendly LCD display, it's easy for operators to choose one of 6 pre-programmed jobs or enter and save up to 10 custom cuts. The FlashCard XL is pre-programmed to process **12" x 18" and 13" x 19" printed sheets**. The infeed tray holds up to forty 200gsm sheets at a time, and can accommodate paper weights up to 350gsm / 130# cover. The **optional cabinet with wastebin** is ideal for users with increased volume, and features casters for easy movement and storage.

Using an automatic friction-feed system, the FlashCard XL has the ability to cut coated and uncoated paper, laminated sheets, and card stock. Its precision cutting blades are self-sharpening and **accurate up to 0.1mm**. Users can also enhance accuracy by using the **built-in registration mark reader**.

The FlashCard XL comes with a standard 3.5" cutting cassette to produce 24-up 2" x 3.5" business cards. **Optional interchangeable cutting cassettes** are available to produce various size pieces including 5" x 7" cards, 3.5" x 5" postcards, 4" x 5" photos, 8.5" x 11" full bleed brochures, 11" x 17" menus, gift tags, mailers, and more.

With its user-friendly features and **large format design**, the Flashcard XL is engineered for precision, bringing on-demand card cutting to the next level at an amazing, industry leading price and value.

Features:

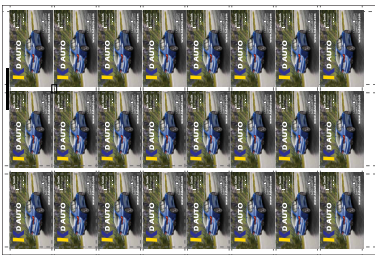
- User-Friendly LCD Control Panel:** Easily set up jobs, use programmed settings, or create custom cuts
- Heavy Duty Quick-Change Cutting Cassettes:** Standard 3.5" cassette cuts 24-up business cards, optional cassettes available
- Double Friction Feed:** Accurate feeding throughout job runs
- Programmed/Custom Jobs:** 6 pre-programmed jobs, up to 10 custom job settings
- Incredibly Accurate:** Cutting tolerance of 0.1mm
- Registration Mark Sensor:** Reads printed mark on sheets to enhance accuracy
- Handles a Variety of Paper Stocks:** Easily processes coated, uncoated and laminated sheets
- Paper Sizes:** 12" x 18" and 13" x 19" sheets
- Paper Weights:** Accommodates paper up to 350gsm / 130# cover
- Interlocking Cover:** Blade will stop if cover is opened.
- Optional FC-XL50 Cabinet:** All metal cabinet on casters, with heavy duty waste bin for paper scraps

Heavy Duty Quick-Change Cutting Cassettes:

- FC-XL05 - Standard 3.5" Cassette
- FC-XL20 - Optional 11" Cassette
- FC-XL30 - Optional 5" Cassette



Examples of Pre-Programmed Jobs:



24-up 2" x 3.5" Business Cards
Standard FC-XL05 - 3.5" Cassette



9-up 3.5" x 5" Postcards
Standard FC-XL05 - 3.5" Cassette



4-up 5" x 7" Postcards
Optional FC-XL30 - 5" Cassette



2-up 8.5" x 11" Brochures
Optional FC-XL20 - 11" Cassette

Specifications

Speed:	Up to 230 business cards per minute (12" x 18" sheet)
Cutting Tolerance:	0.1mm
Paper Sizes:	12" x 18", 13" x 19"
Paper Weight:	180 - 350gsm
Paper Stock:	Coated, non-coated, laminated
Programmable Jobs:	Up to 16: 6 pre-programmed, 10 custom
Feed Tray Capacity:	Up to 40 sheets 200gsm
Minimum Cut Length:	40mm
Feeding Style:	Automatic friction
Registration Mark Reader:	Yes
Dimensions:	31.5" W x 21.5" D x 11.5" H w/ Optional cabinet 31.5" W x 21.5" D x 40.5" H
Weight:	45 lbs. (21kg)
Power:	110V, 50/60Hz, .6 Amp
Certifications:	CE



Shown on optional cabinet with casters and high density waste bin



Adjustable catch tray accommodates a variety of finished card sizes



Heavy-duty cutting cassettes are interchangeable in seconds



Waste bin collects paper scraps and is easy to empty