

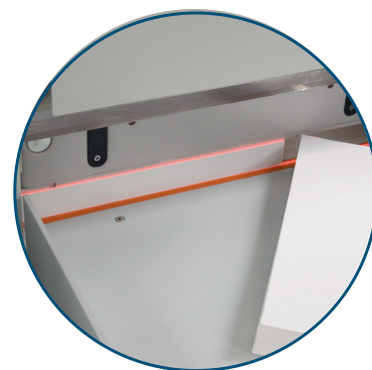


Cut-True 29H

HYDRAULIC GUILLOTINE PAPER CUTTER



Shown with optional wide side tables



Crisp, Accurate Cuts
High-quality hardened steel blade for
razor sharp cuts, time after time

- Hydraulically-controlled paper clamp & blade
- True two-shift operation
- Cuts sheets up to 20.5" wide
- Up to 100 programmable jobs, with up to 100 steps
- Infrared light beam safety curtain

FORMAX®

www.formax.com

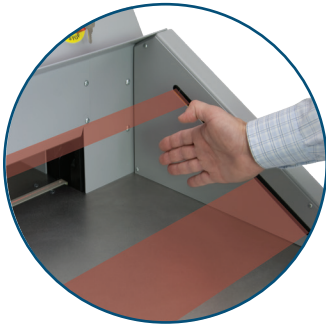
Local Dealer:



WWW.ABE-Online.com

TEL: 800-560-2242

The Formax **Cut-True 29H Hydraulic Guillotine Paper Cutter** is designed for **true two-shift operation** and offers precision cutting for paper stacks up to 20.5" wide. User-friendly, intuitive features include a **7" full-color touchscreen control panel**, **automatically-adjusting back gauge** and the capacity to **program up to 100 jobs/100 cuts**. An **infrared light beam safety curtain** provides safety and convenience as it shuts down operation if the light plane is interrupted. It's ideal for transforming large sheets into brochures, invitations and more, and is a welcome addition to print shops and in-plant finishing operations.



Infrared Light Beam Safety Curtain
Immediately stops operation if the beam is interrupted



Touchscreen Control Panel
Allows for programming up to 100 jobs and 100 steps



Two-Hand Operation
Automatically engages clamp and blade keeping hands away from the cutting blade



Foot Pedal Pre-Clamp
Holds paper to check alignment prior to cutting



Standard Model
Compact model without optional side tables



Blade Change Safety Tool Kit
Change blades safely and easily, and make adjustments

STANDARD FEATURES

- Hydraulically-controlled paper clamp
- Hardened steel blade
- 7" full-color touchscreen control panel
- LED cutting line
- Infrared safety curtain
- Automatic blade return from any position
- Two-hand operation for safety
- Solid steel blade carrier
- Fine-tuning knob
- Low-friction work table
- Hydraulic pressure gauge
- False clamp
- Easy blade change from front of cutter
- Blade change safety tool kit included
- Safety key lock
- Transparent rear safety guard

SUPPLIES

- 29-10-: Replacement Blade
- 29-20: Cutting Sticks, pkg of 8

OPTIONS

- Wide Side Tables (Pair)

NOTES ON DIMENSIONS

* Cut-True 29H is 31" wide with safety curtains removed for easier transport through doorways. Complete assembled width is 33.5" including safety curtains.

SPECIFICATIONS

Cutting Action	Dual-button hydraulic
Maximum Cutting Width	20.5" (520mm)
Maximum Paper Stack Height	3.15" (80mm)
Programmable Jobs	Up to 100, up to 100 cuts each
Control Panel	7" full-color touchscreen
Length Behind Blade	20.5" (520mm)
Length in Front of Blade	18.25" (464mm)
Table Size in Front of Blade	32" W x 37" D (781 x 400mm)
Table Size	30.75" W x 15.75" D 56" W x 15.75" D (w/ side tables)
Clamp Style	Automatic, hydraulic
Hydraulic Clamp Pressure	700 - 4,500 psi (49 - 316 kg/cm2)
Back Gauge Adjustment	Fully programmable using screen
Dimensions*	49.25" H x 31" W x 53.25" D (1250 x 864 x 1352mm)
With Optional Side Tables	49.25" H x 61.5" W x 53.25" D (1250 x 1563 x 1352mm)
Weight	1,014 lbs
Power Supply	220V, 60Hz, 20A dedicated line, NEMA 6-20P