

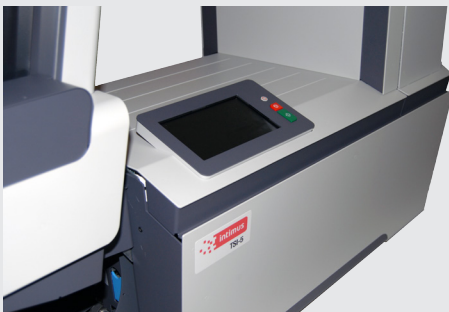


**BUSINESS  
INFORMATION  
SOLUTIONS**

## TSI-5

Fits perfectly into any work environment

- ▶ Productive, Versatile and Intuitive Folder Inserter



**INTELLIGENT  
AND EASY  
DOCUMENT  
PROCESSING**

The TSI-5 combines unparalleled ease of use with advanced technology. With its compact footprint, large loading and unloading capabilities, and features like CIS scanning technology, the TSI-5 can process a wide variety of mailpieces for direct marketing campaigns, invoicing, monthly statements and many other applications. Easy to use via its full-colour touch screen and unique intuitive navigation, and extraordinarily quiet, the TSI-5 fits perfectly into any work environment.

## COMPLETE CONTENT CONTROL AND SECURITY YOU CAN RELY ON

With its Contact Image Sensor (CIS) scanner technology, the TSI-5 can read any type of coding such as OMR, OCR, 1D barcodes and 2D data matrix codes. The code can be printed anywhere on the document. The scanner reads the full A4 page and the barcode can be read horizontally or vertically. This unique feature provides full flexibility to fulfil any layout requirement.



## ENVIRONMENTAL COMMITMENT

The TSI-5 carries the Eco-Label which aims to provide a clear and consistent set of environmental performance criteria used in the design phase of our products. Hence its automatic standby mode helps reduce energy consumption, while its recyclable packaging represents less than 20% of the total weight of the packed product.

## VERSATILE- CUSTOMIZE YOUR TSI-5 TO YOUR NEED

Offering several feeder configurations, it allows you to design and deliver attractive mailshots.



### Increase Productivity

- High-capacity feeder
- MaxiFeeder tray
- High-capacity vertical stacker



### Process Invoices and Statements

- 2 standard feeders
- 1 MaxiFeeder tray
- High-capacity vertical stacker



### Enhance Customer Communications

- 1 daily mail feeder
- 2 standard feeders
- Side exit tray



**1. Automated Stacker**

The high-capacity vertical stacker holds up to 500 finished envelopes

**2. Touch Screen Display**

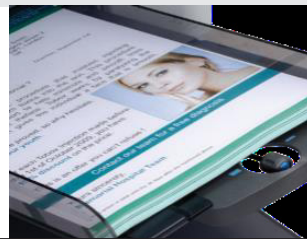
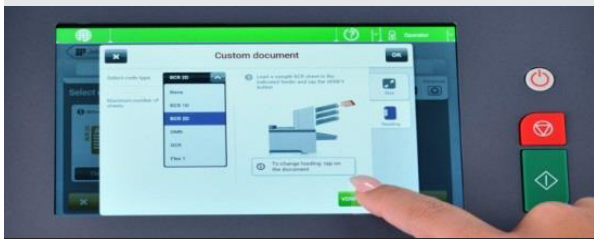
Full-colour 7" touch-screen enables navigation easily to create a new job or access existing jobs within seconds

**3. CIS Scanner**

The scanner can read any type of coding printed horizontally or vertically in the document

**4. Document Feeders**

Quickly process multiple page sets of up to 975 documents using the 3x325 standard feeders. All feeders can be used in cascading mode and have paper sensors which ensure the operator is constantly informed on how to proceed to run the system



**A STATE-OF-THE-ART GRAPHICAL USER INTERFACE**

Designed for all users, the intuitive, full-colour, high-resolution 7" touch-screen provides a wizard-based user-friendly interface, making it easy for anyone to select and run their folding and inserting jobs. Alternatively, see how easy it is to create a new job using our exclusive load'n'Go intuitive procedure. Simply load your documents and envelopes and then press the start button. The TSI-5 will automatically measure the length of all loaded documents as well as the envelope in order to adjust all settings and process the appropriate mail items.

**SMART SOLUTIONS TO MAXIMIZE FLEXIBILITY**

The exclusive FlexFeed® tray enables you to process any document size or type. In combination with the unique semi-automatic envelope separation mechanism, this provides full flexibility for feeding a wide variety of document types. You can use practically any size and type of material to address your prospective and current customers efficiently.

**OPTIMISE PRODUCTIVITY WITH THE MAXIFEEDER TRAY**

Choose to load the MaxiFeeder with up to 325 business reply envelopes or load up to 1,200 sheets to maximize your productivity.

TECHNICAL DATA	
Speed	Up to 3,800 / hour
Color touch screen	Standard
Automatic settings	Standard
Job memory	50
Feeders	Up to 3
Hand/ Multi-sheet feeding	Standard
Cascade from feeders	Standard
Document feeder capacity	325 sheets (20 lb.)
High capacity feeder capacity	725 sheets (20 lb.)
MaxiFeeder capacity: - 325 business reply envelopes - Load up to 1,200 sheets 20 lb.	Optional
Envelope feeder capacity	325
Folding capacity (one set, single fold)	Standard (Up to 10 sheets 20 lb.)
Fold types	Letter, Z, single, double parallel, no fold
insert'n'Frank franking system integration	Optional
Document Height/ Width	3.5" - 14"/5.1" - 9.1"
Envelope length/ Width	3.5" - 6.35"/6.3"-9.7"
Maximum insert thickness	0.04"
Maximum set thickness	0.1"
Standard configuration: 3 feeders with catch tray	
Length x Height x Depth	50" x 29" x 20"
Weight	175 lbs.
Noise level	66 Db

MAIL QUALITY & SECURITY	
Automatic double detection	Standard
Accumulate before folding	Standard
Optical Character Recognition (OCR)	Optional
Tip to tip sealing	Standard
Optical Mark Recognition (OMR)	Optional
LAN embedded	Standard
Wi-Fi embedded	Standard
Barcode Reader (BCR) for 1D and 2D barcodes	Optional

## WHY CHOOSE INTIMUS?

With local presence in 11 countries and effective sales in more than 180, intimus International Group employs beyond 280 people worldwide with a global turnover of 50M\$.

Through our 360° program we offer our customers a complete successful and professional experience leveraged by the knowledge and expertise of our team and by a wide and high quality and performed range of products and services.

intimus International Group has a B2B business model where the service is a core part of its value proposition as our approach is not sell and "bye" but accompanying our customers in their daily operational activities and continuous improvement path.

As a manufacturer we count with 2 different production sites and with the best development engineers on board working on the future to come.